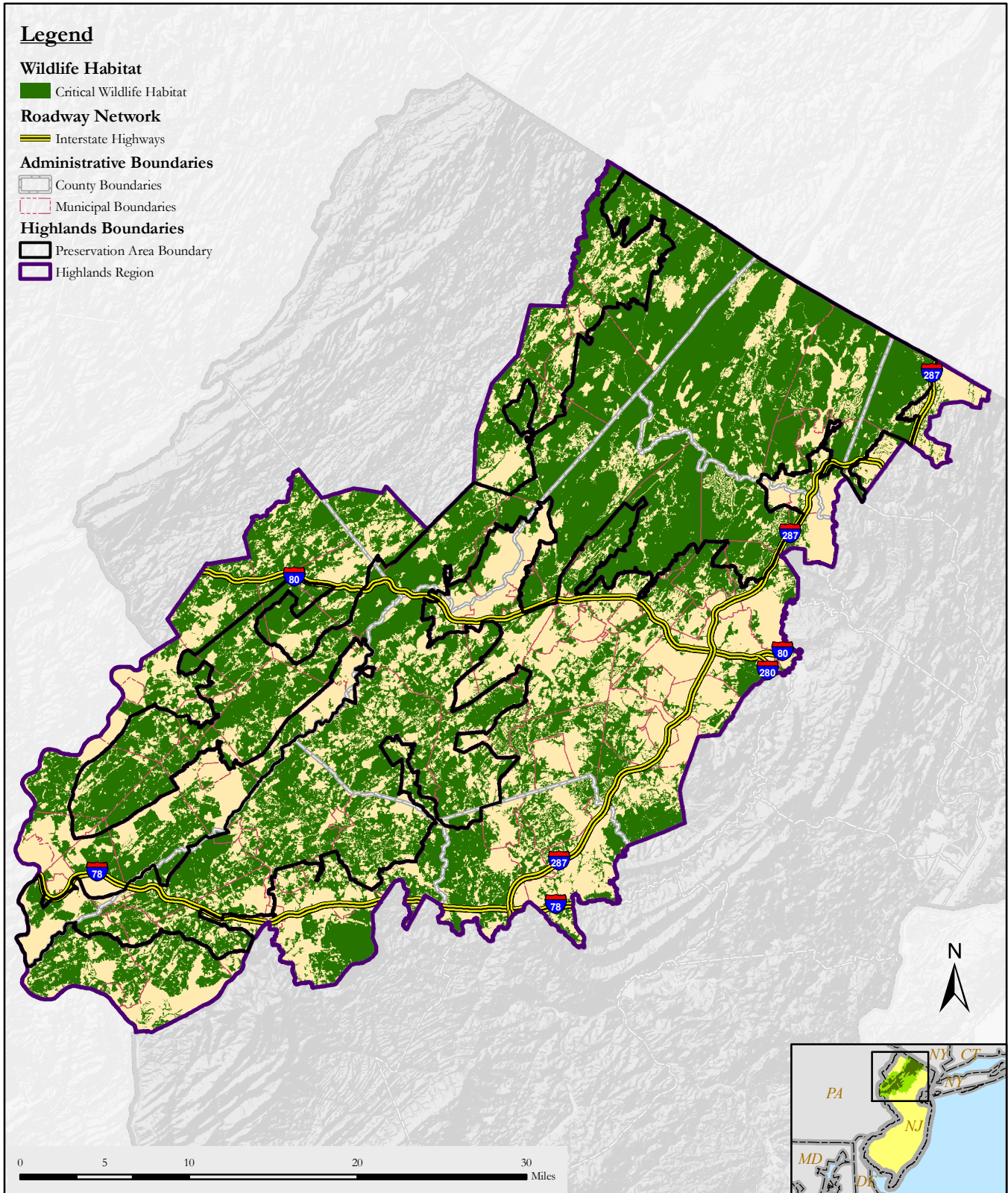


Critical Wildlife Habitat



The Highlands Council makes no representations of any kind, including, but not limited to, the warranties of merchantability or fitness for a particular use, nor are any such warranties to be implied with respect to the information contained on this map. The State of New Jersey shall not be liable for any actions taken or omissions made from reliance on any information contained herein from whatever source nor shall the State be liable for any other consequences from any such reliance. Additional sources of information may include NJDOT and NJDEP GIS digital data, but this secondary product has not been verified by NJDOT or NJDEP.

Highlands Regional Master Plan Final Draft, November 2007



Sources:
New Jersey Highlands Council, 2006
New Jersey Department of Environmental Protection, 2006